



APPROX. SQUARE FOOTAGE
BASED ON EXISTING WALKING
MEASUREMENTS

CITY FILE # 018

TRACT #
APPLICANT'S ADDRESS
CITY AND COUNTY
STATE

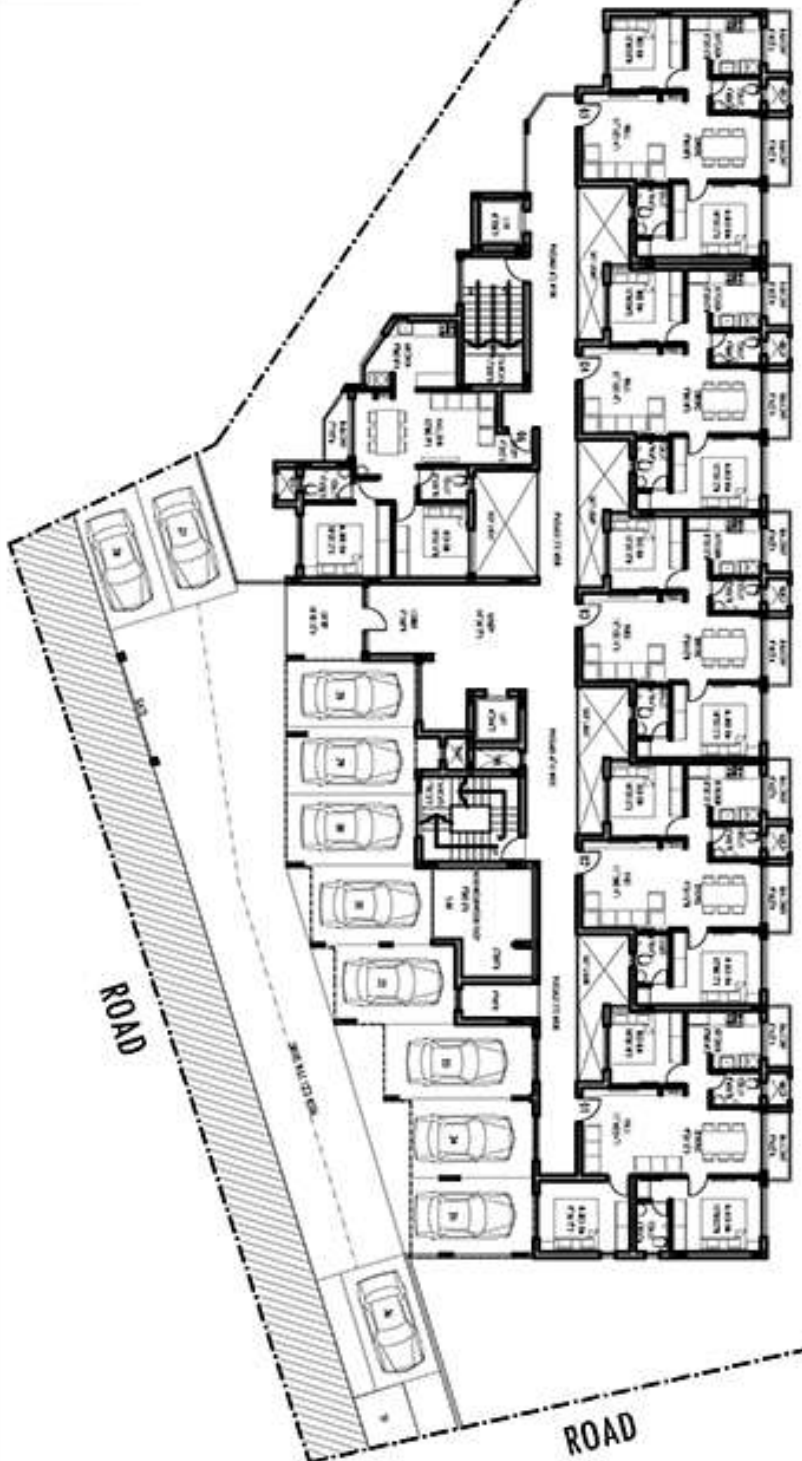
APPLICANT'S NAME
ADDRESS
CITY AND COUNTY
STATE

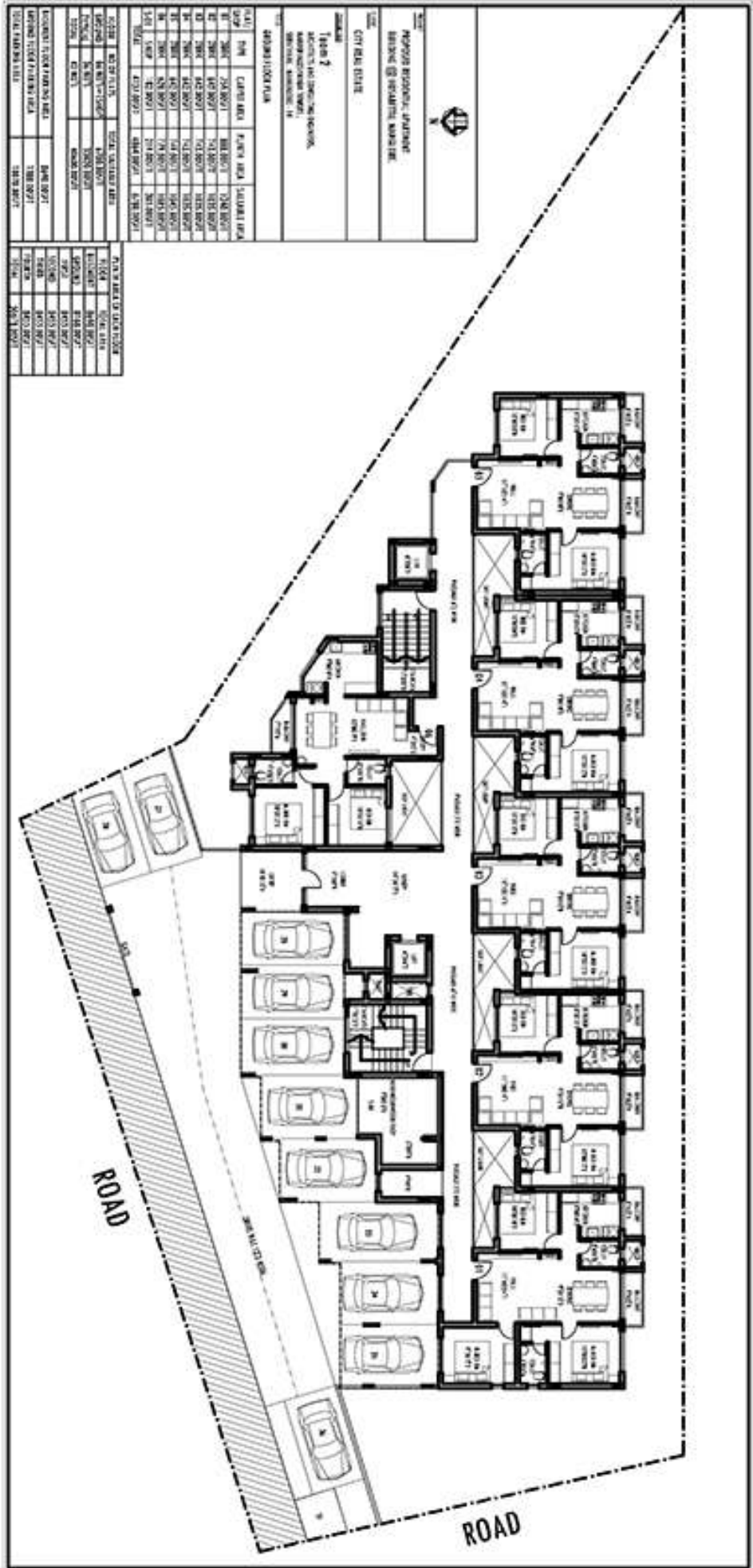
APPLICANT'S PHONE
NUMBER
CITY AND COUNTY
STATE

APPLICANT'S E-MAIL
ADDRESS

| FLOOR | NO. OF UNITS | TOTAL UNIT AREA |
|-------------|--------------|-----------------|
| FIRST | 20 | 10,000 |
| SECOND | 20 | 10,000 |
| THIRD | 20 | 10,000 |
| FOURTH | 20 | 10,000 |
| FIFTH | 20 | 10,000 |
| SIXTH | 20 | 10,000 |
| SEVENTH | 20 | 10,000 |
| EIGHTH | 20 | 10,000 |
| NINTH | 20 | 10,000 |
| TENTH | 20 | 10,000 |
| ELEVENTH | 20 | 10,000 |
| TWELFTH | 20 | 10,000 |
| THIRTEENTH | 20 | 10,000 |
| FOURTEENTH | 20 | 10,000 |
| FIFTEENTH | 20 | 10,000 |
| SIXTEENTH | 20 | 10,000 |
| SEVENTEENTH | 20 | 10,000 |
| EIGHTEENTH | 20 | 10,000 |
| NINETEENTH | 20 | 10,000 |
| TIENNYTH | 20 | 10,000 |
| UNIT TOTAL | 400 | 200,000 |

| TYPE | AREA | NO. OF UNITS |
|-----------|----------------|--------------|
| APARTMENT | 1,000 SQ. FT. | 20 |
| APARTMENT | 1,200 SQ. FT. | 20 |
| APARTMENT | 1,400 SQ. FT. | 20 |
| APARTMENT | 1,600 SQ. FT. | 20 |
| APARTMENT | 1,800 SQ. FT. | 20 |
| APARTMENT | 2,000 SQ. FT. | 20 |
| APARTMENT | 2,200 SQ. FT. | 20 |
| APARTMENT | 2,400 SQ. FT. | 20 |
| APARTMENT | 2,600 SQ. FT. | 20 |
| APARTMENT | 2,800 SQ. FT. | 20 |
| APARTMENT | 3,000 SQ. FT. | 20 |
| APARTMENT | 3,200 SQ. FT. | 20 |
| APARTMENT | 3,400 SQ. FT. | 20 |
| APARTMENT | 3,600 SQ. FT. | 20 |
| APARTMENT | 3,800 SQ. FT. | 20 |
| APARTMENT | 4,000 SQ. FT. | 20 |
| APARTMENT | 4,200 SQ. FT. | 20 |
| APARTMENT | 4,400 SQ. FT. | 20 |
| APARTMENT | 4,600 SQ. FT. | 20 |
| APARTMENT | 4,800 SQ. FT. | 20 |
| APARTMENT | 5,000 SQ. FT. | 20 |
| APARTMENT | 5,200 SQ. FT. | 20 |
| APARTMENT | 5,400 SQ. FT. | 20 |
| APARTMENT | 5,600 SQ. FT. | 20 |
| APARTMENT | 5,800 SQ. FT. | 20 |
| APARTMENT | 6,000 SQ. FT. | 20 |
| APARTMENT | 6,200 SQ. FT. | 20 |
| APARTMENT | 6,400 SQ. FT. | 20 |
| APARTMENT | 6,600 SQ. FT. | 20 |
| APARTMENT | 6,800 SQ. FT. | 20 |
| APARTMENT | 7,000 SQ. FT. | 20 |
| APARTMENT | 7,200 SQ. FT. | 20 |
| APARTMENT | 7,400 SQ. FT. | 20 |
| APARTMENT | 7,600 SQ. FT. | 20 |
| APARTMENT | 7,800 SQ. FT. | 20 |
| APARTMENT | 8,000 SQ. FT. | 20 |
| APARTMENT | 8,200 SQ. FT. | 20 |
| APARTMENT | 8,400 SQ. FT. | 20 |
| APARTMENT | 8,600 SQ. FT. | 20 |
| APARTMENT | 8,800 SQ. FT. | 20 |
| APARTMENT | 9,000 SQ. FT. | 20 |
| APARTMENT | 9,200 SQ. FT. | 20 |
| APARTMENT | 9,400 SQ. FT. | 20 |
| APARTMENT | 9,600 SQ. FT. | 20 |
| APARTMENT | 9,800 SQ. FT. | 20 |
| APARTMENT | 10,000 SQ. FT. | 20 |





APPROVED RESIDENTIAL DEVELOPMENT
 SUBJECT TO REGULATORY APPROVAL
 CITY OF BIRMINGHAM

Table 2
 APPLICANT'S PROPOSED UNIT MIXTURE
 (PERMITTED UNDER SECTION 19)

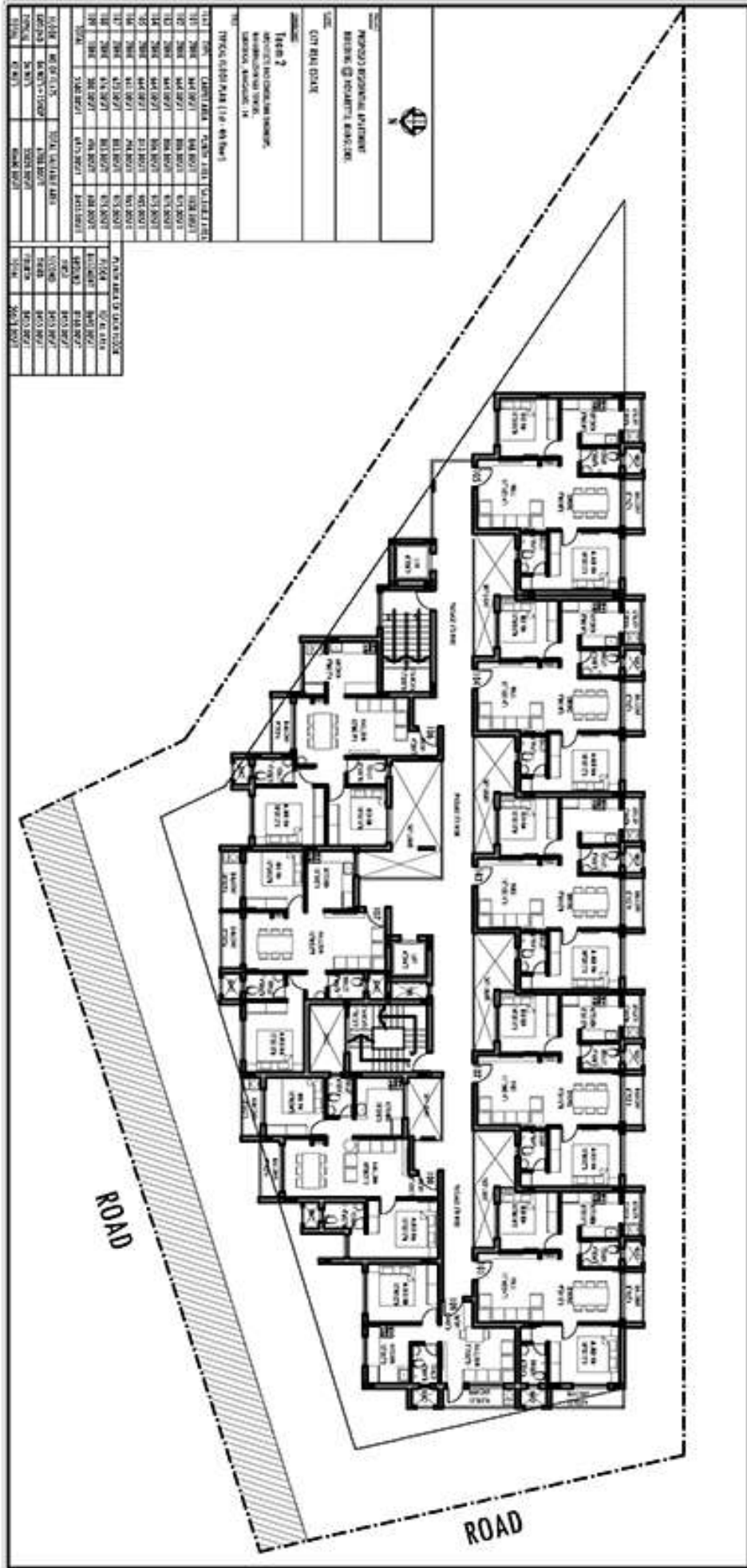
| UNIT TYPE | NUMBER OF UNITS |
|-----------|-----------------|
| STUDIO | 0 |
| 1-BED | 0 |
| 2-BED | 0 |
| 3-BED | 0 |
| 4-BED | 0 |
| 5-BED | 0 |
| TOTAL | 0 |

| UNIT TYPE | MIN. SQ. FT. | MAX. SQ. FT. | MIN. BATHS | MIN. BEDS | MIN. GARAGE |
|-----------|--------------|--------------|------------|-----------|-------------|
| STUDIO | 300 | 400 | 1 | 0 | 0 |
| 1-BED | 400 | 600 | 1 | 1 | 0 |
| 2-BED | 600 | 900 | 1 | 2 | 0 |
| 3-BED | 900 | 1200 | 2 | 3 | 0 |
| 4-BED | 1200 | 1500 | 2 | 4 | 0 |
| 5-BED | 1500 | 1800 | 3 | 5 | 0 |

| UNIT TYPE | MIN. SQ. FT. | MAX. SQ. FT. | MIN. BATHS | MIN. BEDS | MIN. GARAGE |
|-----------|--------------|--------------|------------|-----------|-------------|
| STUDIO | 300 | 400 | 1 | 0 | 0 |
| 1-BED | 400 | 600 | 1 | 1 | 0 |
| 2-BED | 600 | 900 | 1 | 2 | 0 |
| 3-BED | 900 | 1200 | 2 | 3 | 0 |
| 4-BED | 1200 | 1500 | 2 | 4 | 0 |
| 5-BED | 1500 | 1800 | 3 | 5 | 0 |

| UNIT TYPE | MIN. SQ. FT. | MAX. SQ. FT. | MIN. BATHS | MIN. BEDS | MIN. GARAGE |
|-----------|--------------|--------------|------------|-----------|-------------|
| STUDIO | 300 | 400 | 1 | 0 | 0 |
| 1-BED | 400 | 600 | 1 | 1 | 0 |
| 2-BED | 600 | 900 | 1 | 2 | 0 |
| 3-BED | 900 | 1200 | 2 | 3 | 0 |
| 4-BED | 1200 | 1500 | 2 | 4 | 0 |
| 5-BED | 1500 | 1800 | 3 | 5 | 0 |

| UNIT TYPE | MIN. SQ. FT. | MAX. SQ. FT. | MIN. BATHS | MIN. BEDS | MIN. GARAGE |
|-----------|--------------|--------------|------------|-----------|-------------|
| STUDIO | 300 | 400 | 1 | 0 | 0 |
| 1-BED | 400 | 600 | 1 | 1 | 0 |
| 2-BED | 600 | 900 | 1 | 2 | 0 |
| 3-BED | 900 | 1200 | 2 | 3 | 0 |
| 4-BED | 1200 | 1500 | 2 | 4 | 0 |
| 5-BED | 1500 | 1800 | 3 | 5 | 0 |



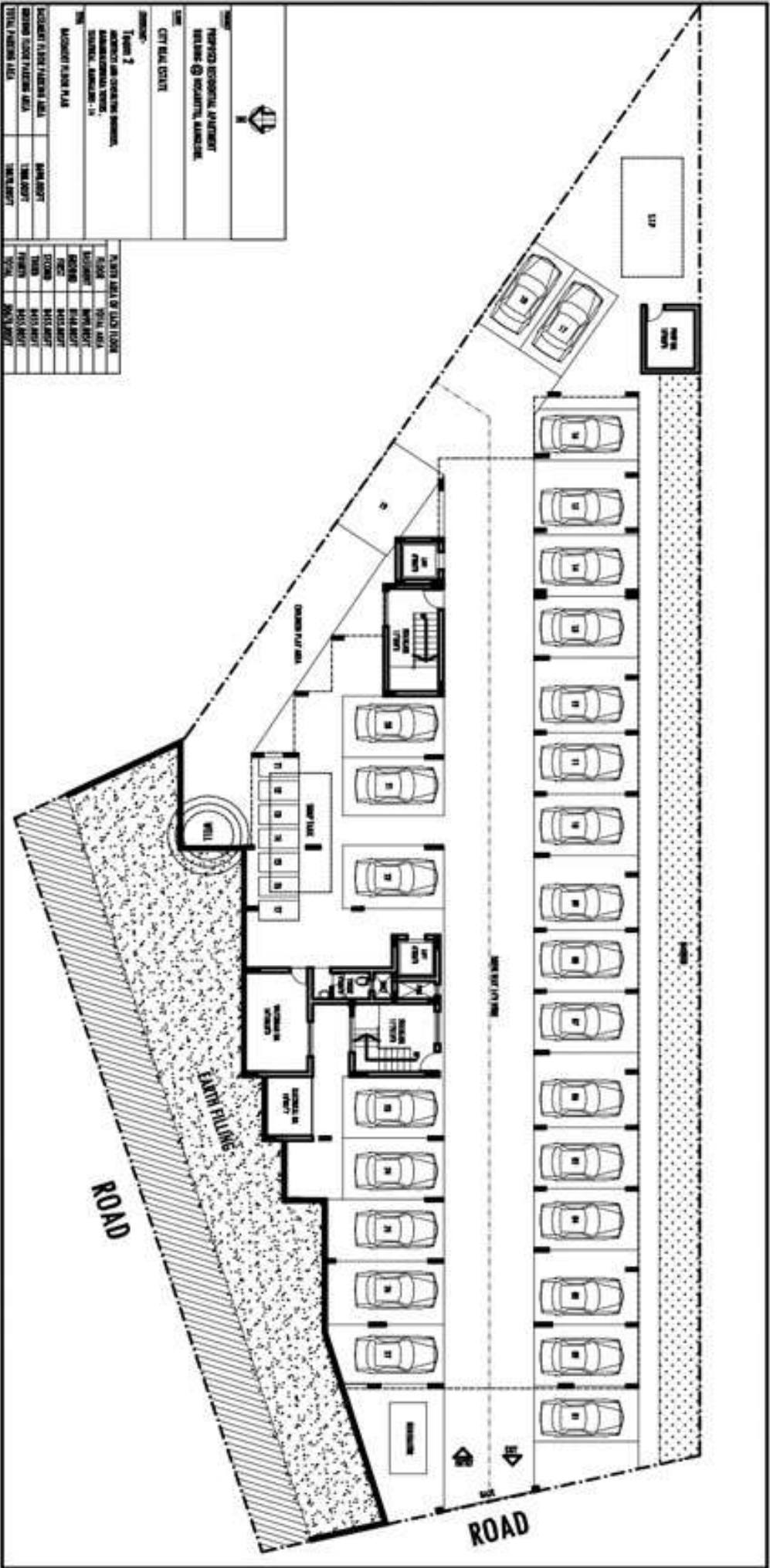
OUTDOOR LABORATORY BUILDING
UNIVERSITY OF MISSISSIPPI

DATE: 07/18/2010

TABLE 2
REVISIONS
NO. DATE DESCRIPTION
1 07/18/2010 NEW

| TABLE 1: GENERAL NOTES | | TABLE 2: REVISIONS | |
|------------------------|-------------------|--------------------|------------|
| 01 | GENERAL NOTES | 1 | 07/18/2010 |
| 02 | CONSTRUCTION | 2 | 08/12/2010 |
| 03 | MECHANICAL | 3 | 08/26/2010 |
| 04 | ELECTRICAL | 4 | 09/08/2010 |
| 05 | PLUMBING | 5 | 09/22/2010 |
| 06 | PAVING | 6 | 10/06/2010 |
| 07 | LANDSCAPE | 7 | 10/20/2010 |
| 08 | EXTERIOR FINISHES | 8 | 11/03/2010 |
| 09 | INTERIORS | 9 | 11/17/2010 |
| 10 | EXTERIOR FINISHES | 10 | 12/01/2010 |
| 11 | MECHANICAL | 11 | 12/15/2010 |
| 12 | ELECTRICAL | 12 | 12/29/2010 |
| 13 | PLUMBING | 13 | 01/12/2011 |
| 14 | PAVING | 14 | 01/26/2011 |
| 15 | LANDSCAPE | 15 | 02/09/2011 |
| 16 | EXTERIOR FINISHES | 16 | 02/23/2011 |
| 17 | INTERIORS | 17 | 03/07/2011 |
| 18 | EXTERIOR FINISHES | 18 | 03/21/2011 |
| 19 | MECHANICAL | 19 | 04/04/2011 |
| 20 | ELECTRICAL | 20 | 04/18/2011 |
| 21 | PLUMBING | 21 | 05/02/2011 |
| 22 | PAVING | 22 | 05/16/2011 |
| 23 | LANDSCAPE | 23 | 05/30/2011 |
| 24 | EXTERIOR FINISHES | 24 | 06/13/2011 |
| 25 | INTERIORS | 25 | 06/27/2011 |
| 26 | EXTERIOR FINISHES | 26 | 07/11/2011 |

| TABLE 3: FINISHES | | TABLE 4: MATERIALS | |
|-------------------|------------------------|--------------------|-----------------|
| 01 | EXTERIOR FLOORING | 1 | CERAMIC TILE |
| 02 | EXTERIOR WALL FINISHES | 2 | CONCRETE |
| 03 | EXTERIOR ROOF FINISHES | 3 | ASPHALT/FLY ASH |
| 04 | EXTERIOR PAINTS | 4 | PORCELANO |
| 05 | EXTERIOR SITES | 5 | BRICK |
| 06 | EXTERIOR SITES | 6 | STONE |
| 07 | EXTERIOR SITES | 7 | WOOD |
| 08 | EXTERIOR SITES | 8 | METAL |
| 09 | EXTERIOR SITES | 9 | GLASS |
| 10 | EXTERIOR SITES | 10 | PLASTER |
| 11 | EXTERIOR SITES | 11 | STUCCO |
| 12 | EXTERIOR SITES | 12 | EIFS |
| 13 | EXTERIOR SITES | 13 | OTHER |



PROJECT: **PURPOSE ECONOMIC DEVELOPMENT**
RESIDENTS & SECURITY ASSURANCE
 LOCATION: **CITY OF ST. LOUIS**

OWNER:
 CITY OF ST. LOUIS

DATE:
 12/15/2024

SCALE:
 1" = 20'-0"

REVISIONS:
 1. ISSUE FOR PERMITTING
 2. UPDATE DRAWING BASED ON COMMENTS FROM THE CITY

DESIGNER:
 J. W. SMITH

| NO. | DESCRIPTION | DATE | BY | CHECKED |
|-----|--|------------|-------------|-------------|
| 1 | ISSUE FOR PERMITTING | 12/15/2024 | J. W. SMITH | M. J. SMITH |
| 2 | UPDATE DRAWING BASED ON COMMENTS FROM THE CITY | 12/15/2024 | J. W. SMITH | M. J. SMITH |
| 3 | ADDITIONAL COMMENTS FROM THE CITY | 12/15/2024 | J. W. SMITH | M. J. SMITH |
| 4 | REVISIONS TO DRAWING | 12/15/2024 | J. W. SMITH | M. J. SMITH |
| 5 | REVISIONS TO DRAWING | 12/15/2024 | J. W. SMITH | M. J. SMITH |
| 6 | REVISIONS TO DRAWING | 12/15/2024 | J. W. SMITH | M. J. SMITH |
| 7 | REVISIONS TO DRAWING | 12/15/2024 | J. W. SMITH | M. J. SMITH |
| 8 | REVISIONS TO DRAWING | 12/15/2024 | J. W. SMITH | M. J. SMITH |
| 9 | REVISIONS TO DRAWING | 12/15/2024 | J. W. SMITH | M. J. SMITH |
| 10 | REVISIONS TO DRAWING | 12/15/2024 | J. W. SMITH | M. J. SMITH |
| 11 | REVISIONS TO DRAWING | 12/15/2024 | J. W. SMITH | M. J. SMITH |
| 12 | REVISIONS TO DRAWING | 12/15/2024 | J. W. SMITH | M. J. SMITH |
| 13 | REVISIONS TO DRAWING | 12/15/2024 | J. W. SMITH | M. J. SMITH |
| 14 | REVISIONS TO DRAWING | 12/15/2024 | J. W. SMITH | M. J. SMITH |
| 15 | REVISIONS TO DRAWING | 12/15/2024 | J. W. SMITH | M. J. SMITH |
| 16 | REVISIONS TO DRAWING | 12/15/2024 | J. W. SMITH | M. J. SMITH |
| 17 | REVISIONS TO DRAWING | 12/15/2024 | J. W. SMITH | M. J. SMITH |
| 18 | REVISIONS TO DRAWING | 12/15/2024 | J. W. SMITH | M. J. SMITH |
| 19 | REVISIONS TO DRAWING | 12/15/2024 | J. W. SMITH | M. J. SMITH |
| 20 | REVISIONS TO DRAWING | 12/15/2024 | J. W. SMITH | M. J. SMITH |
| 21 | REVISIONS TO DRAWING | 12/15/2024 | J. W. SMITH | M. J. SMITH |